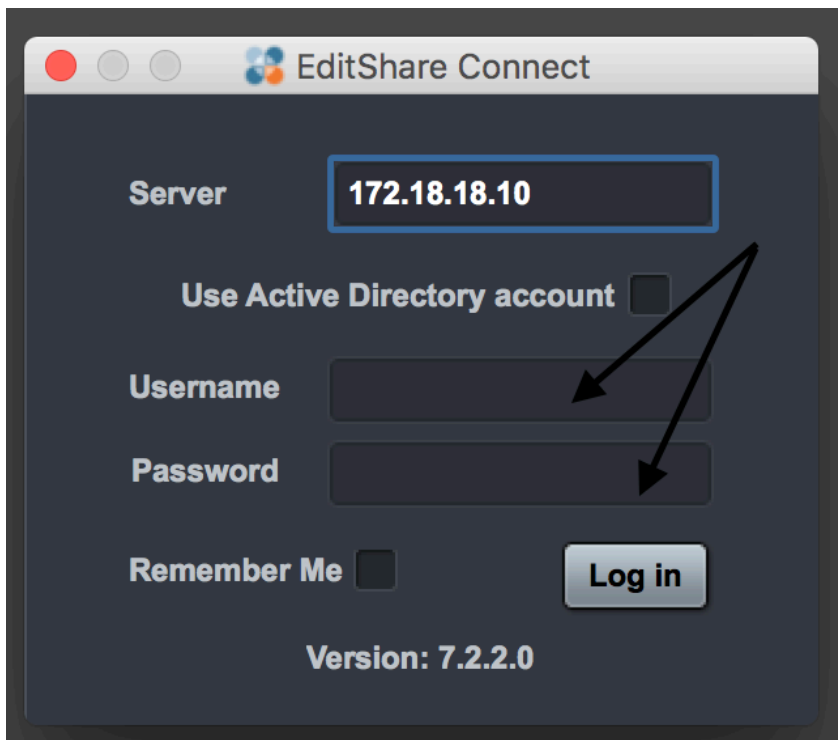


EDIT SHARE LOGGING-IN AND MOUNTING VOLUMES

To log into Edit Share, launch edit share connect on the dock.



Type in your Mass Art Net-ID and password



To mount your Edit Share volume, select EFS on the mount tab.
Note: **Please do not select Native SMB**

Current Profile: All Spaces Select EFS tab

Name	Quota	Usage	Mount/Unmount	T
Unmanaged				
... video1	200 GB	101 GB (51%)	EFS	▼
... Webcasts	100 GB	8 GB (8%)		▼
Other Spaces				
... AFP File Exchange	—	0 B		▼
... SMB File Exchange	—	0 B		▼